



# Art In The Park

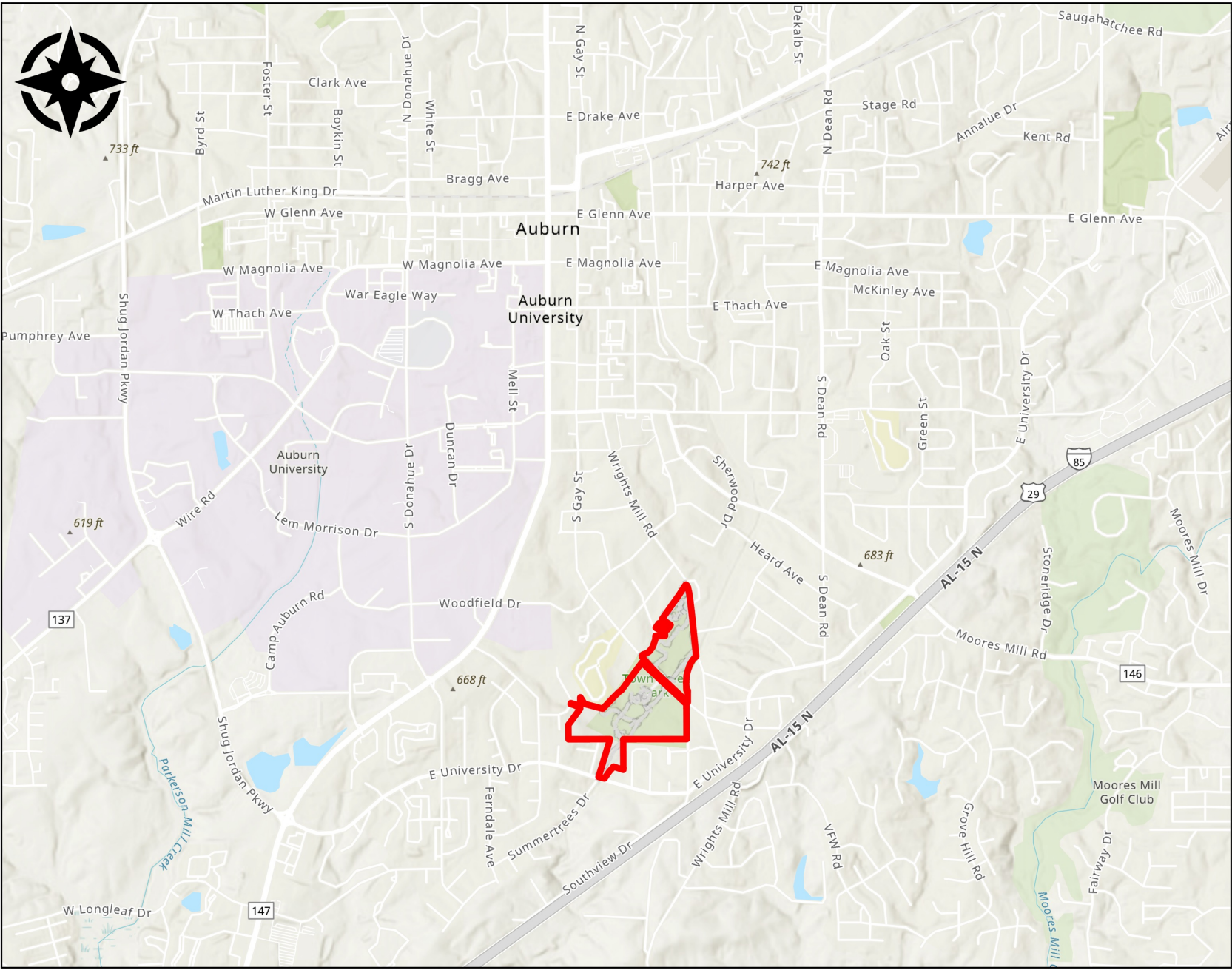
*A plan to bring Public Art to Town Creek Park*

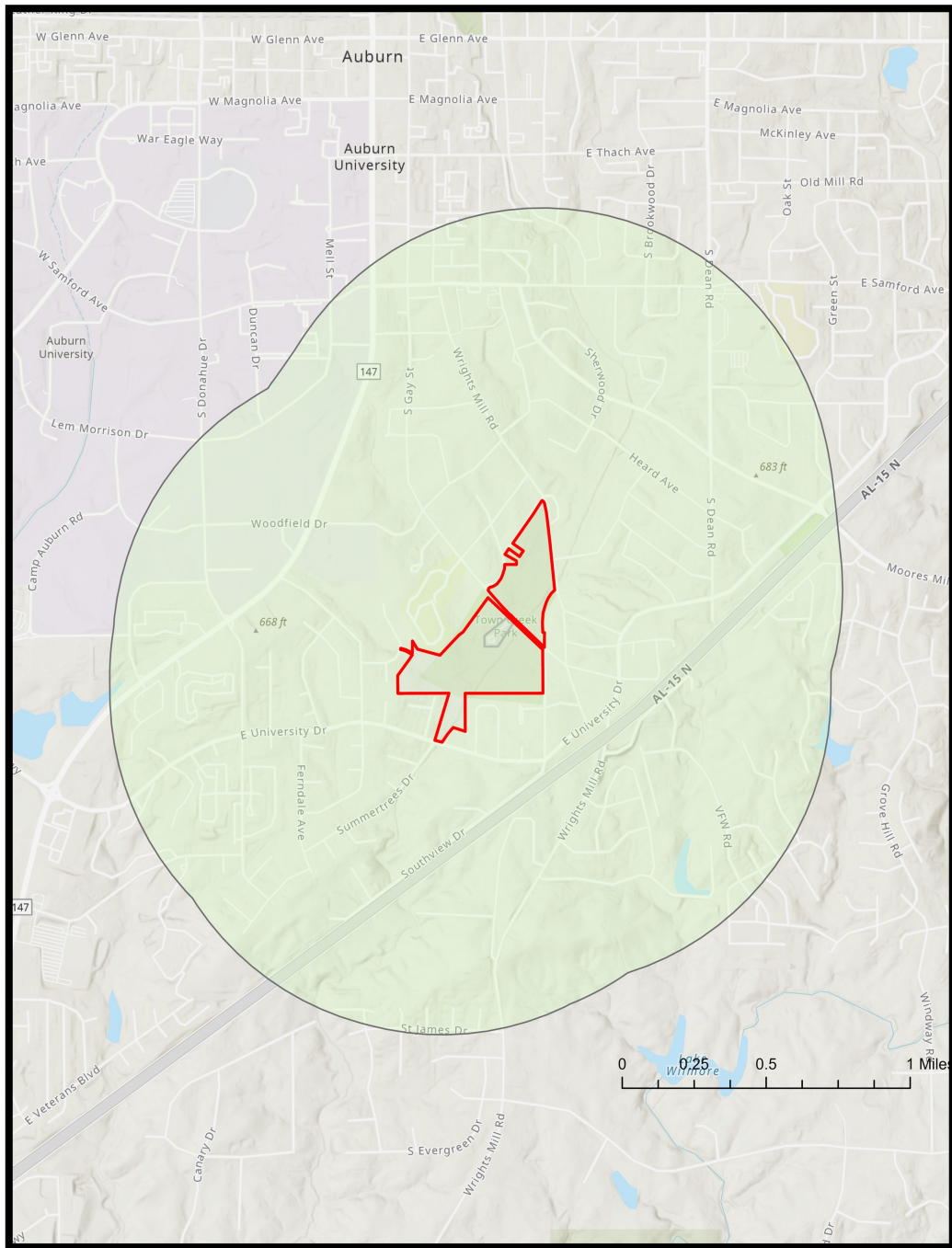
Kayla Chase, Riley Dibble, Casidhe Shetter, and Siwei Xin



# What is Town Creek Park?

Town Creek Park is located at 1150 S. Gay Street. The park features pavilions and various walking trails. The park is home to the Historic Tree Trail and the City Market. It provides a range of resources such as walking trails, dog exercise facilities, multiple open spaces, and playgrounds.





# Background

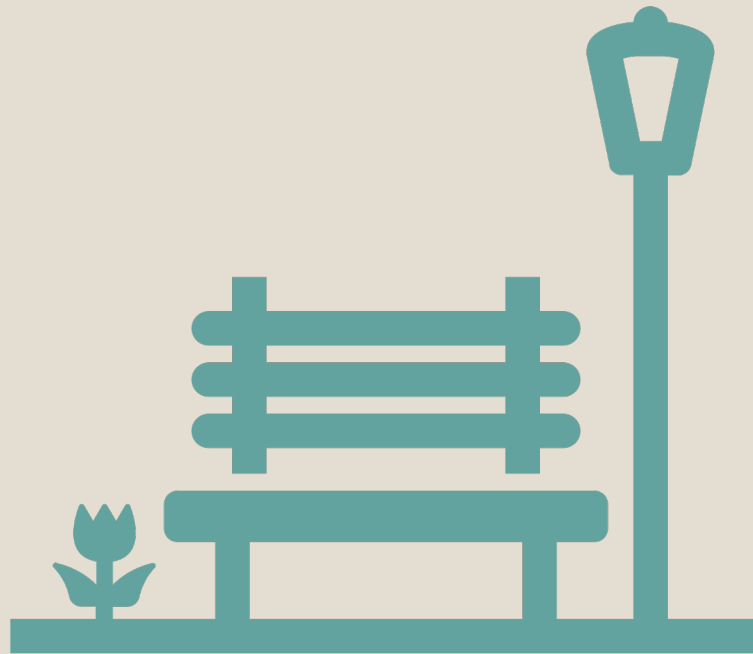
- Within one mile...
  - Total population is 7,714
    - 75% White
    - 8% Black
    - 8% Asian
    - 9% Other
  - Most of the population is 18+
  - Predominantly high income
    - Average household income of \$99,431
  - 3,668 housing units
  - Total of 137 businesses
    - other services
    - accommodation and food services
    - retail trade
    - food services and drinking places
    - health care and social assistance

# Problem Statement

Accessibility, visual appeal, and safety represent three of the shortcomings of Town Creek Park. Through our plan to install art into the park, we will assess these three issues in the four main focus areas on an individual but cohesive basis.

# Vision

Town Creek Park, a naturalistic and inclusive park, strives to be holistic, eco-friendly, and an aesthetic experience for all through the further incorporation of art and interactive exhibits.



# Mission Statement

Town Creek Park will enrich our community by providing a **safe, eco-friendly, and accessible space** for people of all ages to play and learn while building community. Town Creek Park will **preserve the natural ecosystems** of eastern Alabama serving as a **refuge from city life**. Town Creek Park will serve as an example of incorporating inclusivity into recreational activities.



# GOALS AND OBJECTIVES



# Goals

- 
- Goal 1: Promoting Parks for All
  - Goal 2: Activating Spaces
  - Goal 3: Implement Aesthetics and Functionality
  - Goal 4: Create an Immersive Experience

# Goal 1: Promoting Parks for All



Multiple cultural identities will be highlighted by sourcing art from local artists



Reserve spaces of varying kinds for more community gatherings

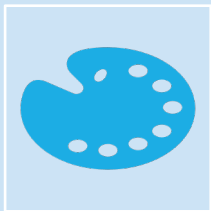


Build barrier-free experiences for all abilities to enjoy recreational activities

# Goal 2: Activating Spaces



Highlight spaces with better signage and wayfinding opportunities



Include spaces for both temporary and permanent art installations

# Goal 3: Implement Aesthetics and Functionality



Implementations need to be environmentally sustainable



Create uniform placemaking and design themes



Create plant guidelines based on native Alabama flora to promote plant-based designs

# Goal 4 : Create an Immersive Experience



Include interactive art pieces



Promote community through the construction of gardens



Construct activities along pathways



# DESIGN PLAN

*With a Focus on Diverse and Accessible Recreational Activities*



# CONCEPT MAP



Image Citation: 22



Image Citation: 6



Image Citations: 1, 5, 6, 9, 11

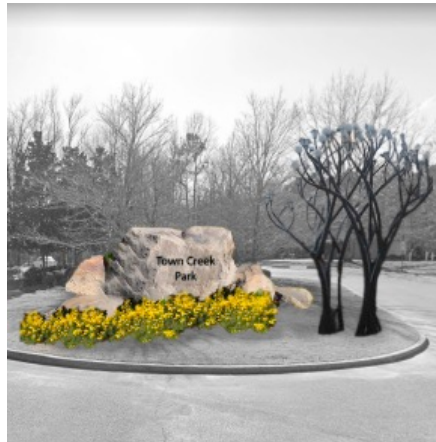


Image Citations: 6, 8, 14, 17

# Study Area: Parking Lot

- Parking Lot Vision
  - Temporary asphalt art
  - Update entry features
  - Better connectivity
  - Lighting sculptures
  - Native landscaping
  - Electric charging stations







Image Citation: 23



Image Citation: 24



Image Citations: 18, 20

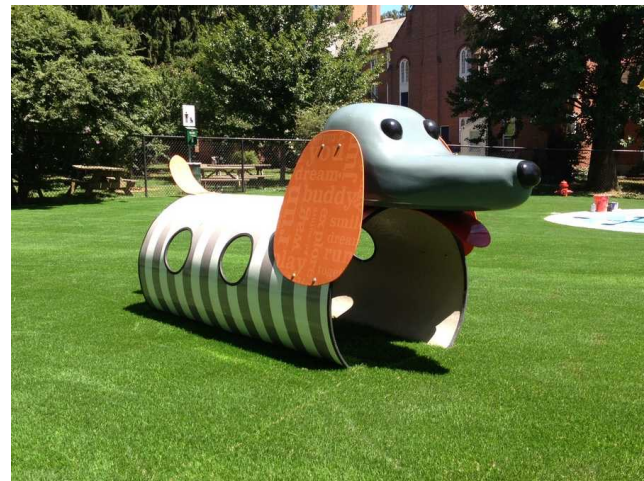


Image Citation: 24

# Study Area: Dog Park and Silo

- Dog Park Vision
  - Expansion and separate sections
  - Shady trees
  - Interactive art as play equipment
  - Connect with local artists
  - Sustainability
- Silo Vision
  - Dog-inspired mural to aid in wayfinding
- Case Studies
  - Dogwood Park
  - Beau's Dream Dog Park
  - Pilgrim Bark Park





Image Citation: 13

# Study Area: Historic Tree Trail

- Historic Tree Trail Vision
  - Artistic wayfinding signs
  - Uniform design
  - Design competition
  - Brochures and QR codes





Image Citation: 16



Image Citation: 4



Image Citation: 10



Image Citation: 19

# Study Area: Open Areas

- Open Area Vision
  - Rock gardens
  - English gardens with topiary features
  - Temporary art installations
  - Seating areas with stone elements





Image Citations: 2, 17

# Study Area: Pond

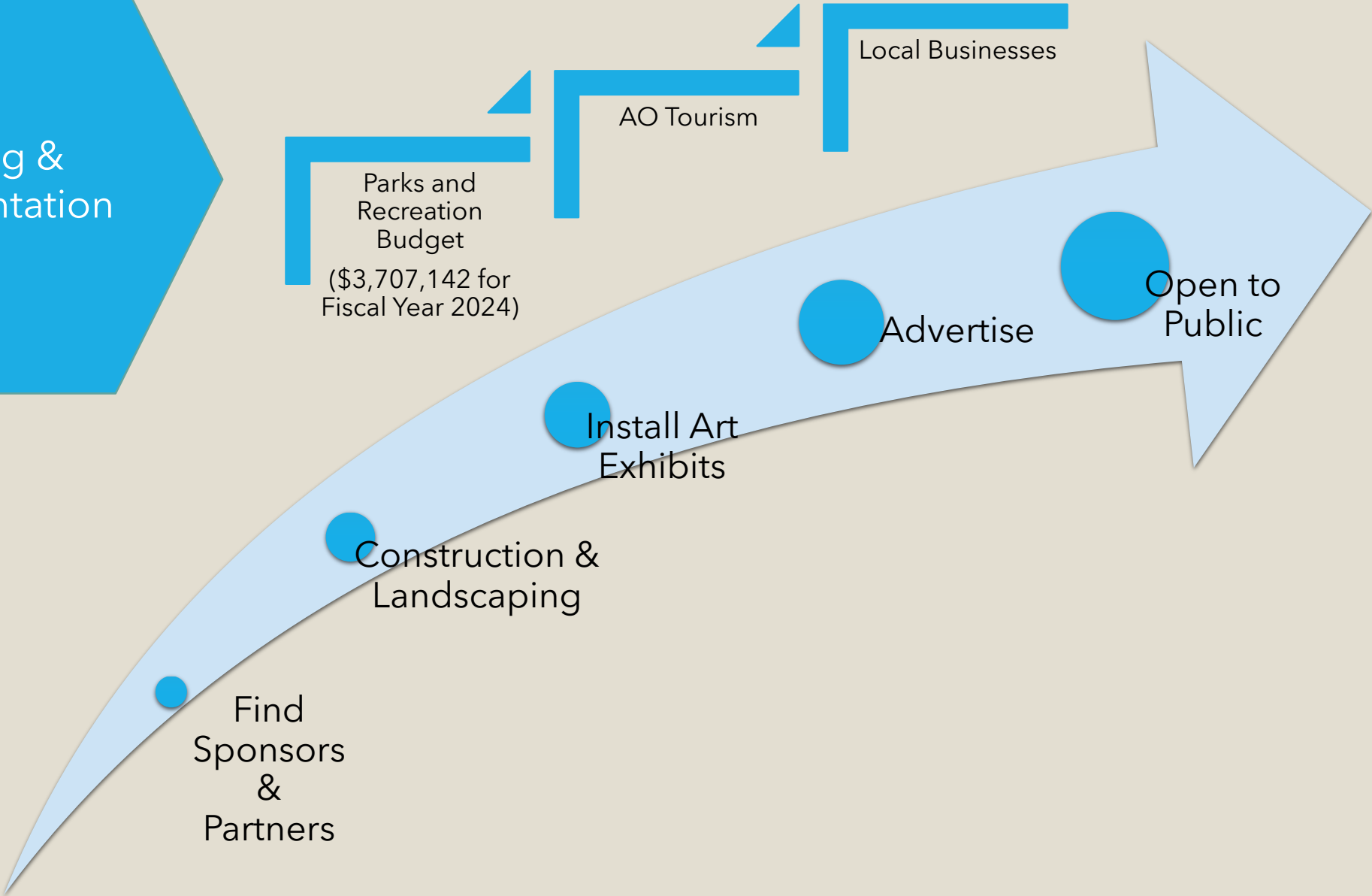
- Pond Vision
  - Native plants
  - Garden Spaces
- Landscaping as art



# STAKEHOLDERS



# Funding & Implementation



Parks and Recreation Budget  
(\$3,707,142 for Fiscal Year 2024)

AO Tourism

Local Businesses

Advertise

Open to Public

Install Art Exhibits

Construction & Landscaping

Find Sponsors & Partners

# IN CONCLUSION...



# Acknowledgments

We are in all humbleness and gratefulness to acknowledge my depth to all those who have helped us put these ideas, well above the level of simplicity and into something concrete. We would like to express a special thanks to our professor [Dr. Binita Mahato](#) whose suggestions and encouragement help us in the process of completing the framework for this project. A debt of gratitude is also owed to the [Auburn City Manager, Megan McGowen Crouch, The Development Services Executive Director B. Scott Cummings, Jan Dempsey Community Art Center, Planning Commissioner Jana Jager, Planning Commissioner Marcus Marshall](#), and the [various arts committees in the City of Auburn](#).



# References

1. Bamber, M. (n.d.). *Parking spot painting* [Photograph]. Pinterest. <https://www.pinterest.com/pin/244812929725199189/>
2. Dibble, R. (2023). *Bank of Pond in Town Creek Park* [Photograph].
3. Dibble, R. (2023). *Dog Park Entrance* [Photograph].
4. Dykyostudio. (n.d.) *Stone garden in the morning at Suan Luang Rama 9 Public Park* [Photograph]. <https://www.dreamstime.com/stock-image-stone-garden-morning-suan-luang-rama-public-park-thailand-image32939441>
5. E., L. (n.d.). *Senior parking space ideas, senior parking spot, painted parking spot ideas, senior year, senior '23* [Photograph]. Pinterest. <https://www.pinterest.com/pin/25614291622169909/>
6. Fennell, C. (2017). *Light Tree* [Photograph]. CFennell. <http://www.cfennell.com/work/2017/light-tree>
7. Fry, K. (2013). [Photograph of a Dog Tunnel]. WGAL. <https://www.scribbr.com/apa-examples/image/>
8. Google. (n.d.). [Google Earth map of Town Creek Park Entrance]. Retrieved April 10, 2023, from <https://earth.google.com/web/@32.58422238,-85.47555469,181.3944397a,0d,66.11133695y,212.2523169h,85.78191645t,0r/data=!hoKF19TWmM4Z0VDOWNLM216YThiSDFWbWcQAq>
9. Google. (n.d.). [Google Earth map of Town Creek Park Parking Lot]. Retrieved April 10, 2023, from <https://earth.google.com/web/@32.58396168,-85.47593386,181.31526892a,0d,73.86448417y,238.9272231h,84.26920718t,0r/data=!hoKFjZ4YjhmcW15aDZjRENUbmtac0t4MWcQAq>
10. Gross & Daley. (n.d.). *A flagstone path is lined with dianthus, also known as "garden pinks," an English favorite for centuries* [Photograph]. Arts and Crafts Homes. <https://artsandcraftshomes.com/exterior/garden-in-montgomery>
11. McCaffrey, L. (n.d.). *Senior Parking Spot* [Photograph]. Pinterest. <https://www.pinterest.com/pin/1266706136937546/>
12. [Photograph of a Bronze Outdoor High Quality Bronze Lovely Custom Dog Statue]. (n.d.) <https://www.animalsstatue.com/animal-sculpture-park/custom-dog-sculpture/>
13. [Photograph of a Tree Tag with a QR Code]. (n.d.) The Standard. <https://www.thestandard.com.hk/breaking-news/fc/4/168413/QR-code-tree-tags-put-up-on-200,000-trees-next-year>
14. [Photograph of Golden Gate Park Rock]. (n.d.). <https://www.sftouristips.com/golden-gate-park-san-francisco.html>
15. [Photograph of a Pieloch Dog Park Bench]. (n.d.). <https://stat.descriptionscripts.com/final/first.php?pid=4574357&sid=25412341&kid=863843534&suid=568457>
16. [Photograph of Pebble Seats]. (n.d.) Stone Forest. <https://stoneforest.com/products/421-pebble-seats?variant=28887686512724>
17. [Photograph of Swamp sunflower bushes near a curb]. (n.d.). <https://gardeningsolutions.ifas.ufl.edu/plants/ornamentals/swamp-sunflower.html>
18. Shetter, C. (2023). *Town Creek Park Silo* [Photograph].
19. Shaw, J. (2018). *Living Sculpture Design and Maintenance* [Photograph]. <https://treesunlimitednj.com/living-sculpture-design/>
20. Silence Scream, (n.d.). *illustration colorful dog head with pop art style Free Vector* [Artwork]. Vecteezy. <https://www.vecteezy.com/vector-art/3726453-illustration-colorful-dog-head-with-pop-art-style>
21. [Town Creek Park]. (n.d.) <https://www.auburnalabama.org/parks/facilities/town-creek-park/>
22. [Photograph of a Vinyl-Wrapped EV Station]. (n.d.) <https://takomaparkmd.gov/department/makeover-for-electric-vehicle-charging-stations/>
23. Dog Wood Park. (2017). Dog Wood Mural [Photograph]. Facebook. <https://www.facebook.com/jaxdogs/photos/a.249487541741381/1589017367788385/?type=3&theater>
24. [Photograph of a Sculpture of Two Dogs by Candice Crawford]. (n.d.). <https://www.pilgrimbarpark.org/art-in-the-park/>